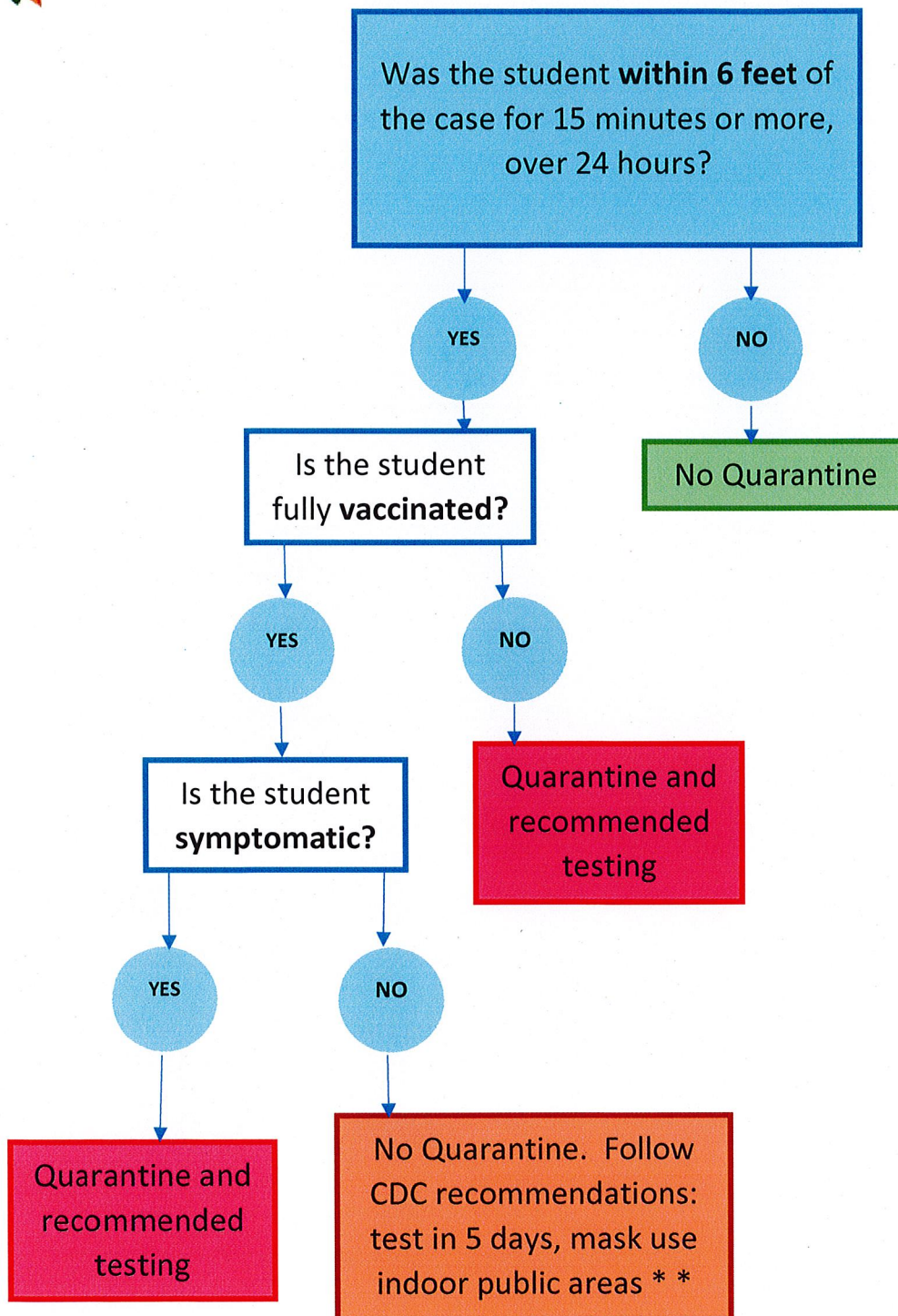


\*\* Needs to be identified, reached by contact tracer and symptom status verified.

\*\*\* Other factors and extenuating circumstances may alter contact tracing. Contact LHD for guidance.

## LUNCHROOM: STUDENTS



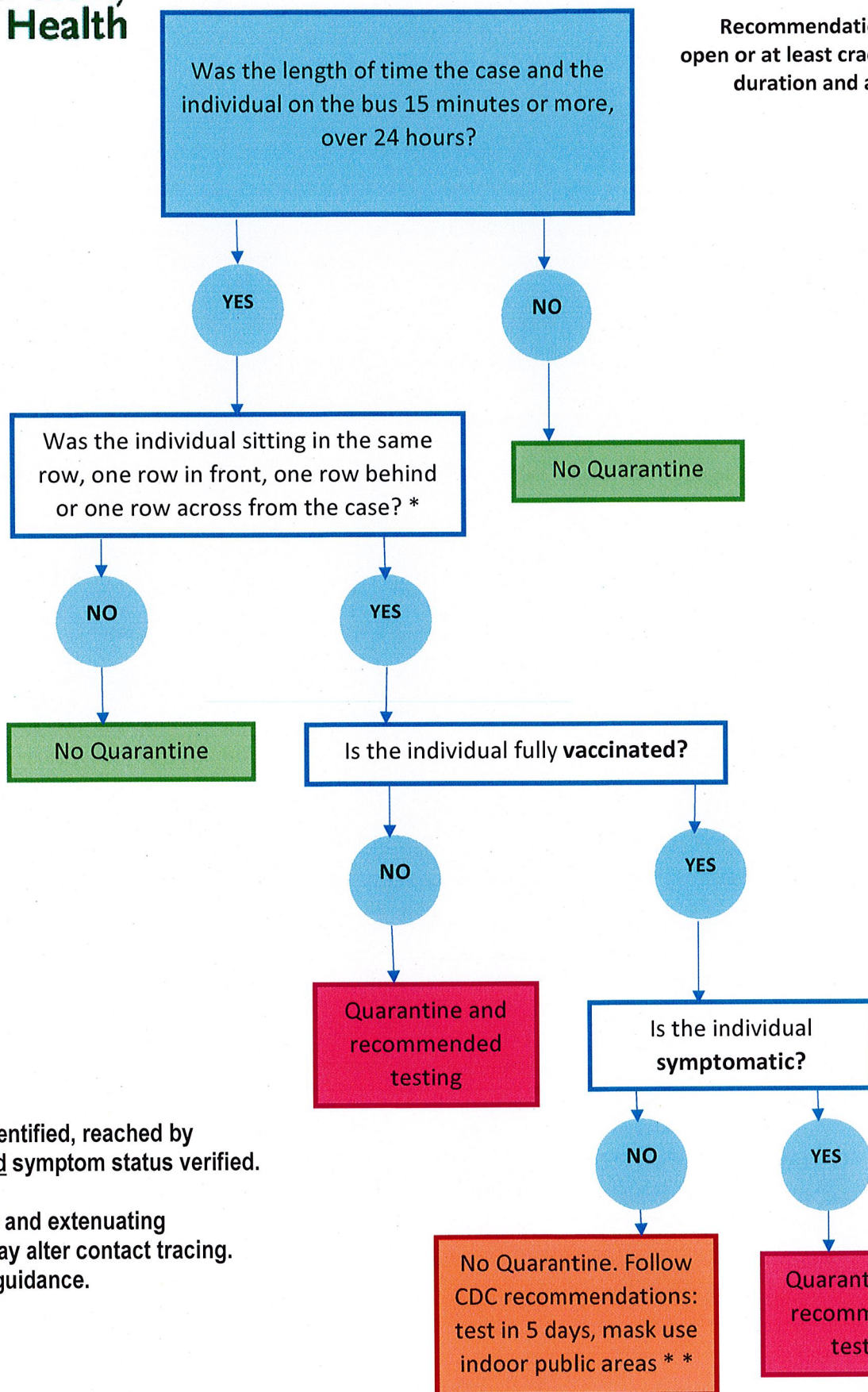
\*\* Needs to be identified, reached by contact tracer and symptom status verified.

\*\*\* Other factors and extenuating circumstances may alter contact tracing. Contact LHD for guidance.



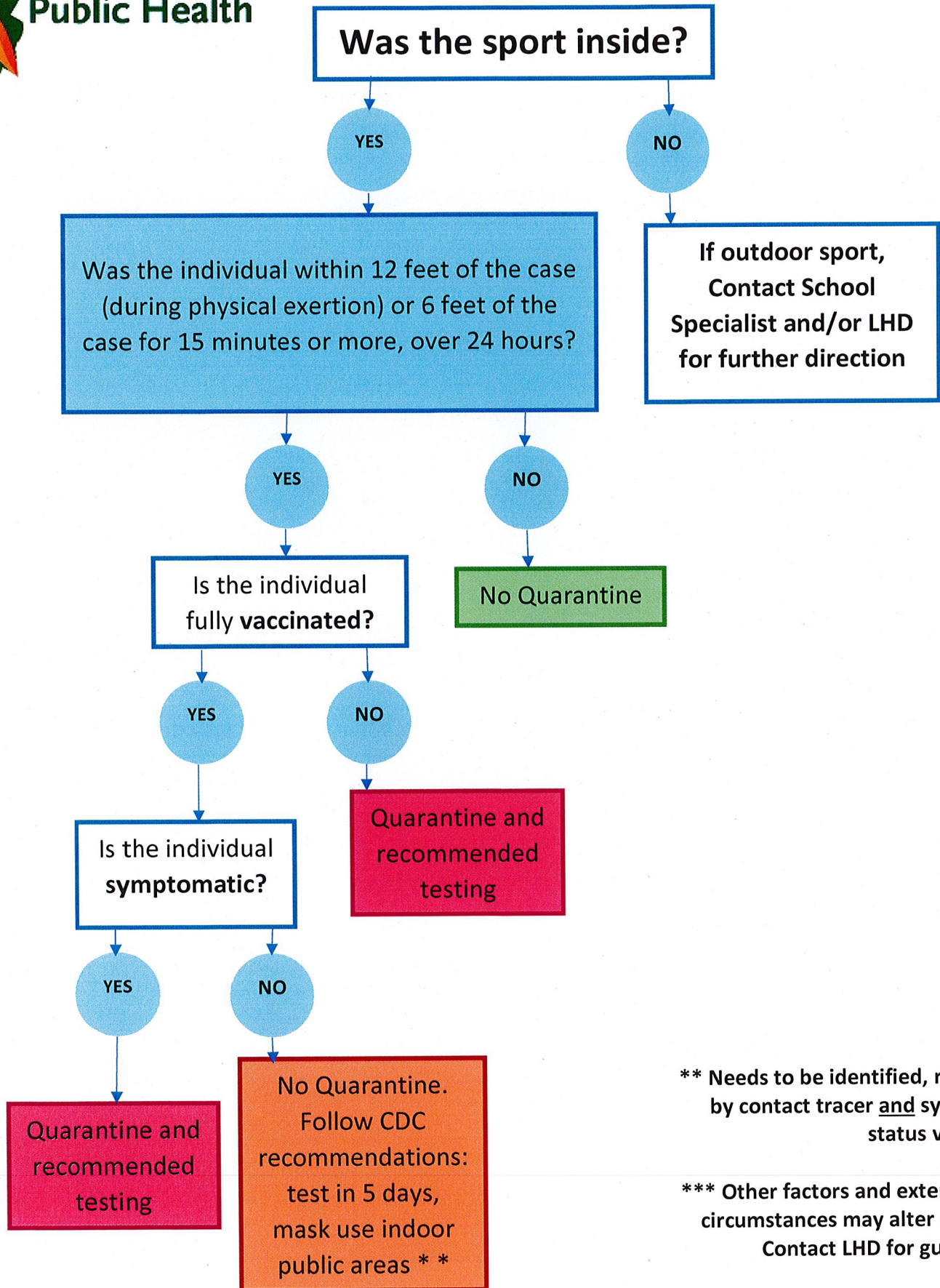
**Recommendations: Windows open or at least cracked for entire duration and assigned seats.**

# SCHOOL: TRANSPORTATION



**\*\* Needs to be identified, reached by contact tracer and symptom status verified.**

**\*\*\* Other factors and extenuating circumstances may alter contact tracing. Contact LHD for guidance.**



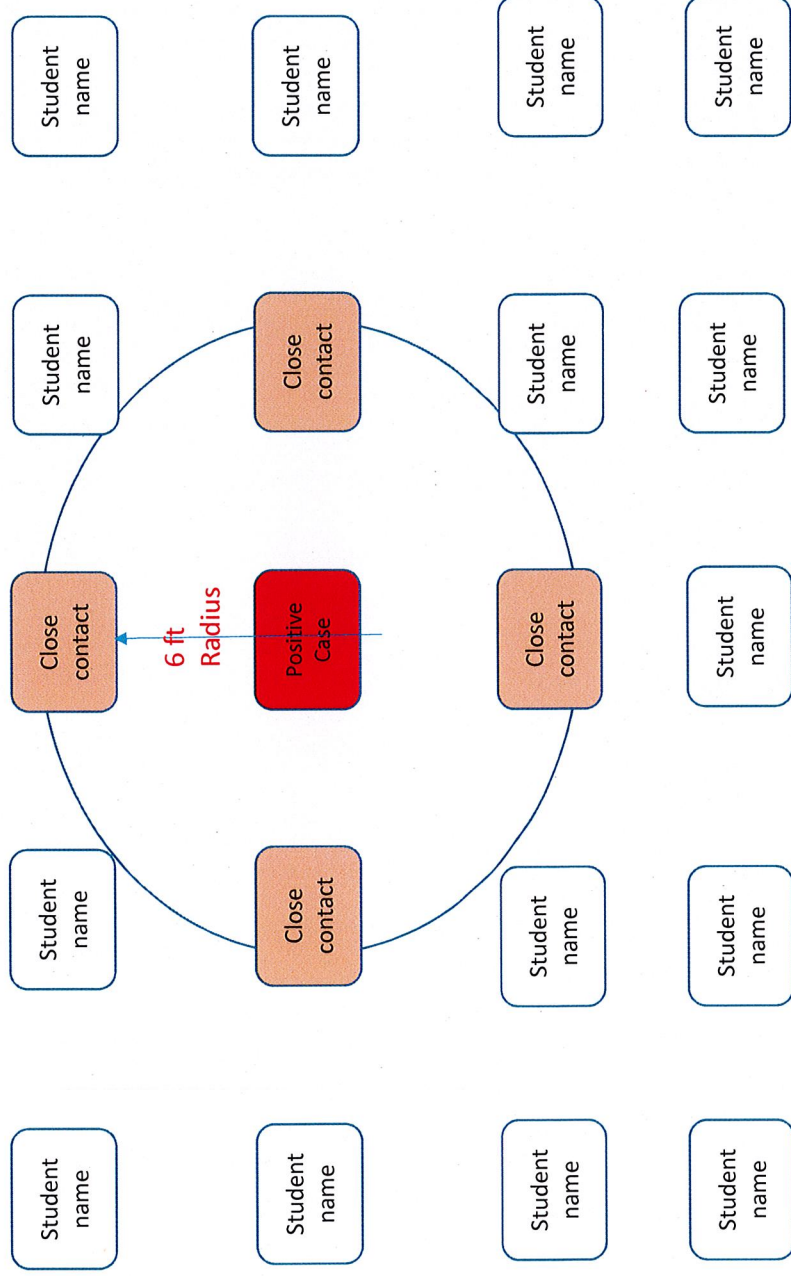
**\*\* Needs to be identified, reached by contact tracer and symptom status verified.**

**\*\*\* Other factors and extenuating circumstances may alter tracing. Contact LHD for guidance.**



# Example Seating Chart

## Option 1 Desk Spacing Further Apart



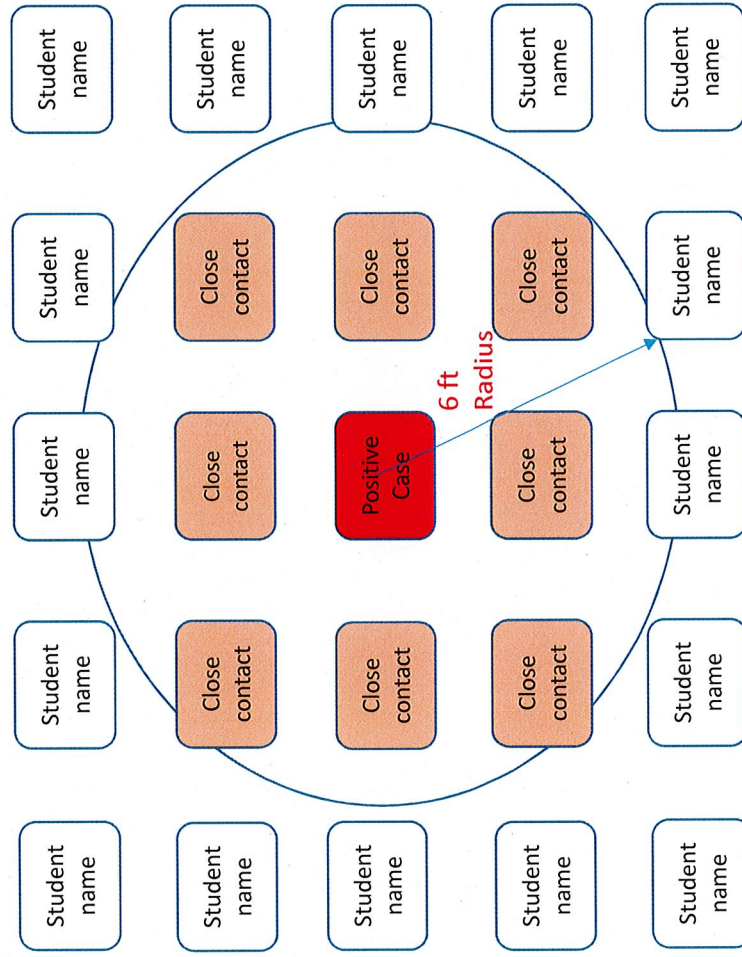
Utilize a 6 foot radius from the positive student's location to annotate seating distance.

Class activities may further expand/impact those students considered as close exposures.

# Example Seating Chart

## Option 2

### Desk Spacing Closer Together

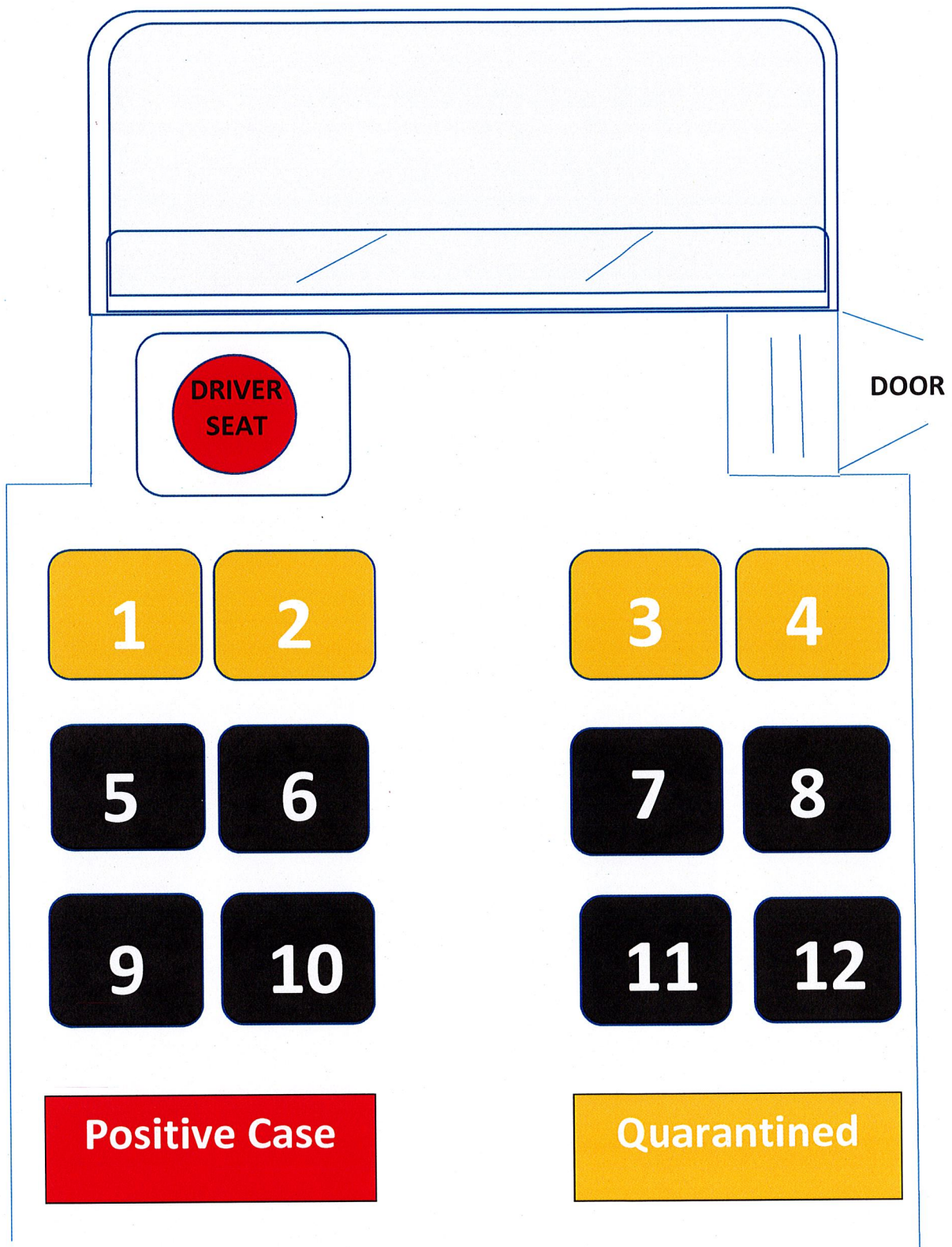


Utilize a 6 foot radius from the positive student's location to annotate seating distance.

Instructor Desk

Class activities may further expand/impact those students considered as close exposures.

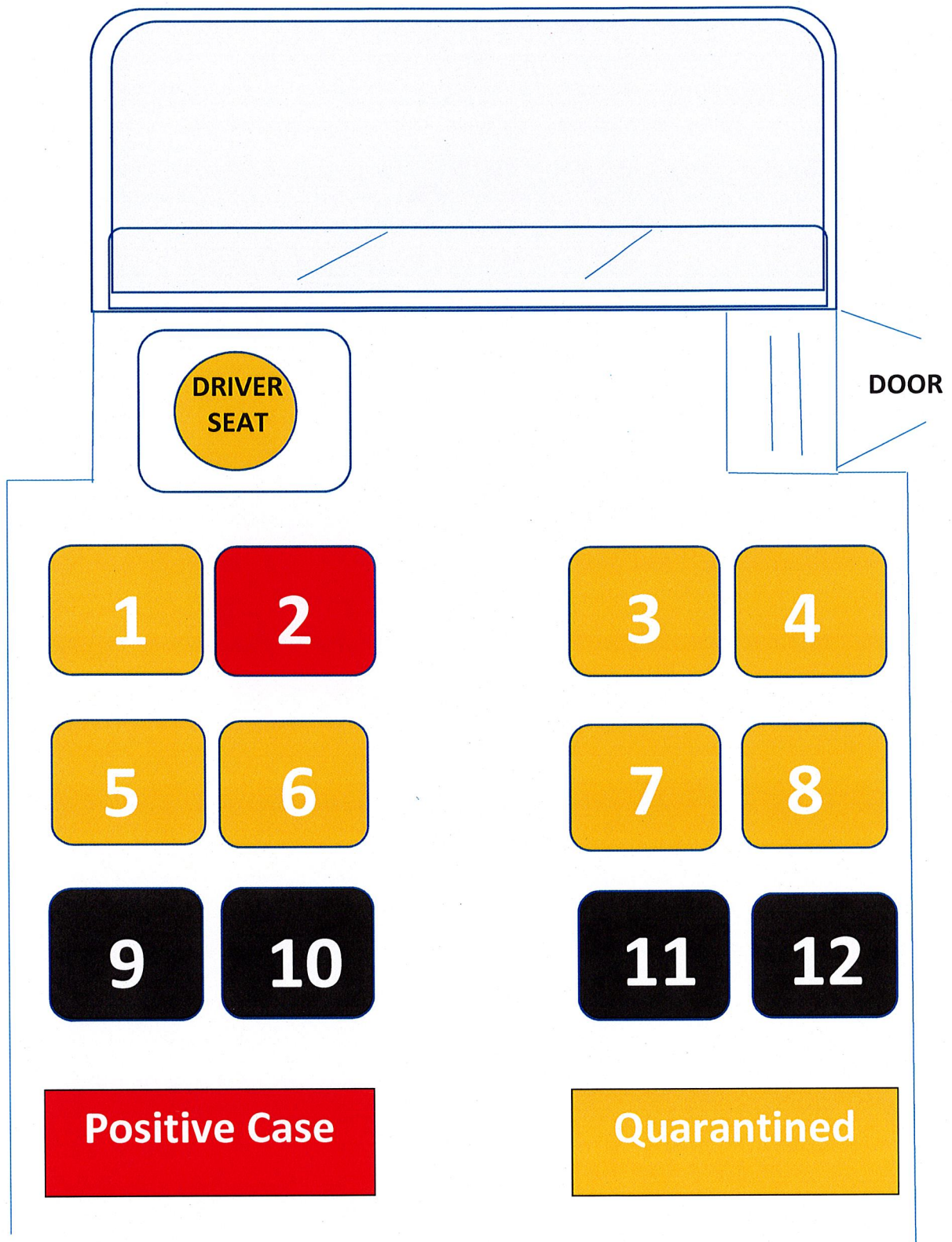
# TRANSPORTATION DIAGRAM #1



\*\*\* Other factors and extenuating circumstances may alter contact tracing. Contact LHD for guidance.



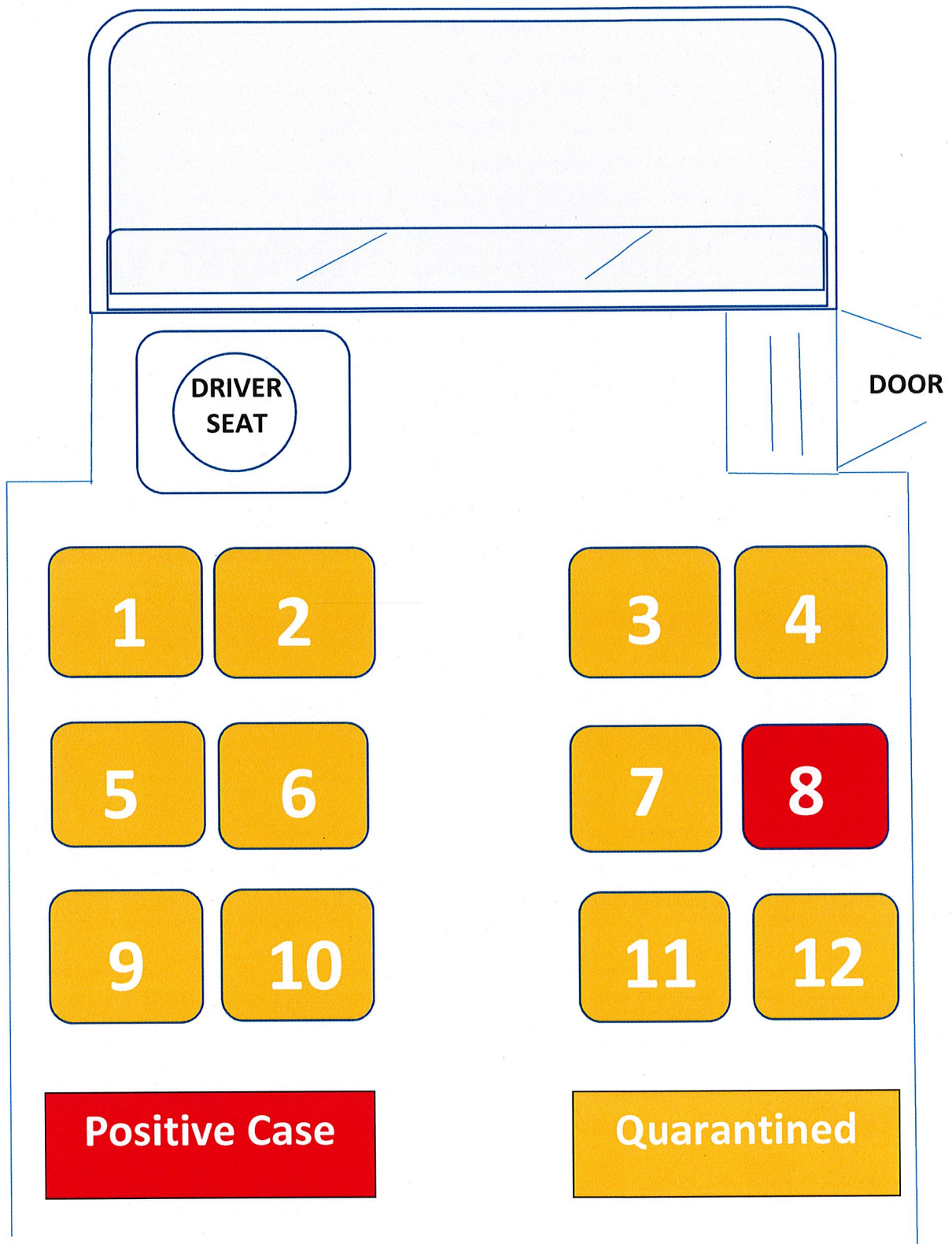
# TRANSPORTATION DIAGRAM #2



\*\*\* Other factors and extenuating circumstances may alter contact tracing. Contact LHD for guidance.



# TRANSPORTATION DIAGRAM #3



\*\*\* Other factors and extenuating circumstances may alter contact tracing. Contact LHD for guidance.