

# Administrative

Note 1 (District Superintendent salary and benefits summary)

Local salary	\$164,751
Local benefits	\$41,762
Total local salary & benefits	\$206,513
Total local and state salary for 2024-25	\$208,250

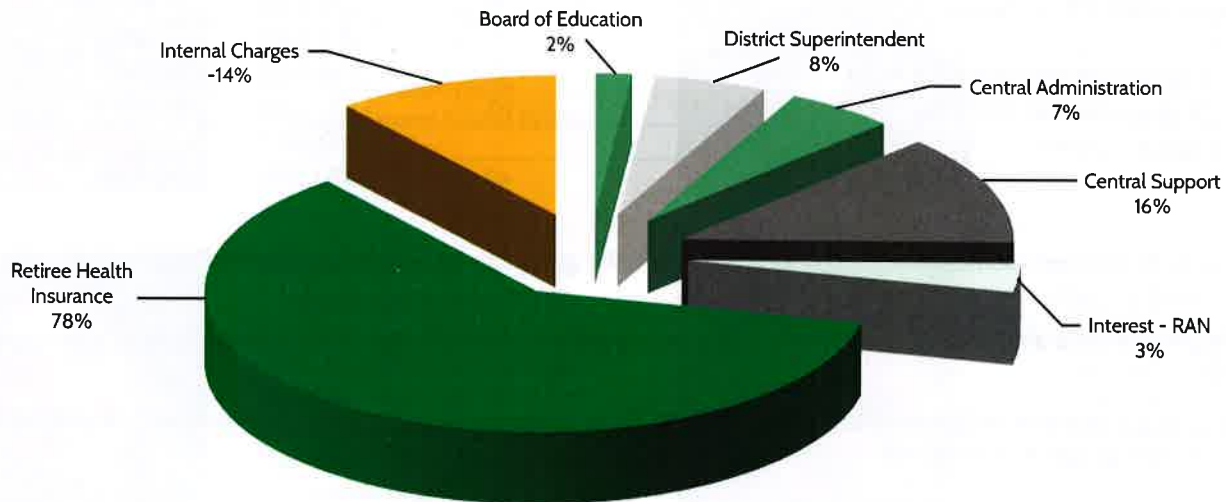
Note 2 Revenue anticipation note (RAN) to meet cash flow needs.

Note 3 Retiree health insurance reflects 284 total retirees. Expense for all retirees must be shown in the Administrative budget.

Note 4 Total FTE budgeted in CoSer 001 11.3

NYS Education Law Section 1950 requires that Boards of Cooperative Educational Service (BOCES) present their proposed budgets for review and consideration at their Annual Meeting in April. Component school districts will meet and vote on the BOCES Administrative Budget on April 17, 2024.

## 2024 -2025 ADMINISTRATIVE BUDGET



### Projected 2024-25 Administrative Charges

School District	23-24 RWADA	24-25 RWADA	Change	% Change	23-24 Charge	24-25 Charge	Change	% Change
Adirondack	1,127	1,142	15	1.33%	\$248,076	\$254,990	\$6,914	2.79%
Alexandria	462	450	(12)	-2.6%	\$101,696	\$100,478	\$(1,218)	-1.2%
Beaver River	864	883	19	2.2%	\$190,184	\$197,160	\$6,975	3.67%
Belleville-Henderson	480	497	17	3.54%	\$105,658	\$110,972	\$5,314	5.03%
Carthage	2,911	2,937	26	0.89%	\$640,772	\$655,785	\$15,013	2.34%
Copenhagen	428	409	(19)	-4.44%	\$94,212	\$91,323	\$(2,889)	-3.07%
General Brown	1,374	1,391	17	1.24%	\$302,446	\$310,588	\$8,142	2.69%
Indian River	3,291	3,343	52	1.58%	\$724,418	\$746,439	\$22,021	3.04%
LaFargeville	478	473	(5)	-1.05%	\$105,218	\$105,613	\$396	0.38%
Lowville	1,260	1,241	(19)	-1.51%	\$277,352	\$277,096	\$(257)	-0.09%
Lyme	330	339	9	2.73%	\$72,640	\$75,693	\$3,053	4.2%
Sackets Harbor	386	399	13	3.37%	\$84,967	\$89,090	\$4,124	4.85%
South Jefferson	1,832	1,837	5	0.27%	\$403,262	\$410,173	\$6,911	1.71%
South Lewis	961	1,006	45	4.68%	\$211,536	\$224,624	\$13,088	6.19%
Thousand Islands	854	859	5	0.59%	\$187,983	\$191,801	\$3,818	2.03%
Town of Webb	208	207	(1)	-0.48%	\$45,785	\$46,220	\$435	0.95%
Watertown	3,667	3,861	194	5.29%	\$807,183	\$862,100	\$54,917	6.8%
<b>Total</b>	<b>20,913</b>	<b>21,274</b>	<b>361</b>	<b>1.7%</b>	<b>\$4,603,389</b>	<b>\$4,750,146</b>	<b>\$146,757</b>	<b>3.19%</b>
Inlet Common	60	60	0	0.0%	\$13,207	\$13,397	\$190	1.44%
<b>Total all schools</b>	<b>20,973</b>	<b>21,334</b>	<b>361</b>	<b>1.7%</b>	<b>\$4,616,596</b>	<b>\$4,763,543</b>	<b>\$146,947</b>	<b>3.18%</b>